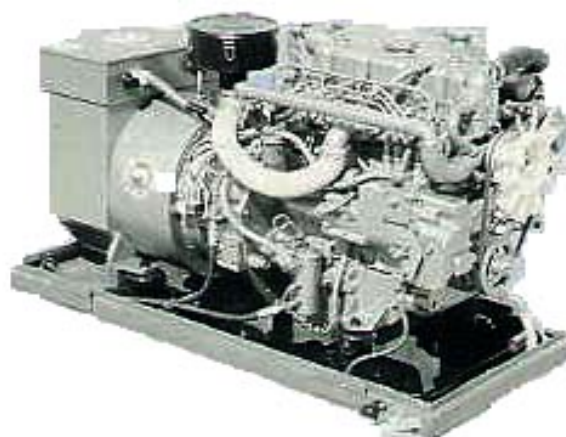


MINI 4 - SUPER MINI 4

Series: 15-30 KVA

- Compact dimensions
- High speed power
- Maximum starting capability
- Low noise
- Low weight



With MITSUBISHI diesel engine and sound cover to eliminate noise. Brushless alternator Standard

Accessories

- 12V remote electric start/stop
- Oil pressure and c.w. temp. cut out
- Battery trickle charging
- Heat exchanger cooling
- Speed fine adjustment
- Seawater pump
- Fuel lift pump 12V
- Water-cooled exhaust manifold
- Anti vibration mounts
- Energised to run failsafe system
- Suitable for vehicle applications with radiator

Model	KVA	KW	Hz	Phase	Voltage	Dimensions LxWxH mm	Weight kg
H4G15M1	15	15	50	1	230	980x550x600	320
H4G20M1	20	16	50	1	230	1210x525x680	310
H4G20M3	23	18	50	3	400/230	1210x525x680	305
H4G25M1	25	20	50	1	230	1300x525x720	430
H4G30M3	30	24	50	3	400/230	1300x525x720	438

Standard Specification

Engine and alternator close-coupled via flexible disc and bellhousing. Generator resiliently mounted on common steel base tray. Seawater circulation pump, heat exchanger, water-cooled exhaust and injection elbow fitted. The engine with forced lubrication system, constant speed governing to BS649 Class A.. Output as per BS649 and DIN 6270. Included are injection pump, fuel delivery pump, fuel fine filter, oil filter and air cleaner. All control circuits wired into a common terminal box located on the main alternator. Each set factory tested and sprayed in heat resistant paint.

Engine

Low weight, low profile, high speed watercooled 4-stroke 4 cylinder in-line diesel engine from MITSUBISHI. Thanks to advance casting technology, cylinder heads and blocks are light-weight but rigid with high durability. High degree of interchangeability of parts. Low noise, smooth running with Bosch M-type injection pump and mechanical type governor. Forced oil lubrication system. Marinisation by HFL using dual circuit cooling via heat exchanger and water-cooled exhaust manifold with water injected elbow. Belt-driven seawater pump with easily accessible belt tension adjustment.

Model/No of cylinders	K4D	K4E	K4M
HP@3000rpm	26	28	40
Bore/Stroke mm	73x78	76x78	84x90
Displacement	1.3	1.4	1.9
12V Start Battery	100 AH	100 AH	100 AH
Approx. Fuel Consumption L/Hr	6.4	7.4	8.8
INCLINATION ANGLE APPROXIMATELY 25 DEGREES IN ALL DIRECTIONS			

Alternator

Different alternators are being used to suit particular applications, with brushless alternators in 1 and 3 phase configuration. All machines 2 pole for 3000 rpm 50Hz with terminal box mounted on the alternator. Alternators with overload/short circuit protection equal to 3 times nominal current. The windings have a shortened pitch to reduce the harmonic content. The series complies with most specs such as CEI 2-3, IEC 34.1, VDE 0530 and BS4999. From no load to full load the transient voltage variation is lower than +/- 15%. The voltage regulation is to within +/- 1.5% of its set value at any balanced load, at any power factor to 0.8 lagging - subject to correct conditions. Permissible overload approximately 300% for 10 secs. Radio suppression Grade G as per VDE 0875. On request, additional noise filtration to match VDE 0875 Grade N and K, MIL 461-462 AB.